



هيئة تنظيم الخدمات العامة  
Authority for Public Services Regulation

## **Statement of Charges**

**2022 Cost Reflective Tariffs**

## Option (1):

### Structure of Cost Reflective Tariffs

$$\text{Cost Reflective Tariff} = \text{BST}_t + \text{T}_t + \text{D}_t + \text{S}_t$$

Where  $\text{BST}_t$  is the cost of energy charges at the electricity Bulk Supply Tariff in year t;  
 $\text{T}_t$  is a transmission use of system charge;  
 $\text{D}_t^1$  is a distribution use of system charge ; and  
 $\text{S}_t$  is a charge for the administrative costs of Supply

<sup>1</sup> not applicable to transmission connected customers

### 2022 Cost Reflective Tariffs

CRT component	Charge	Type of Charge	Calculation of charge
<b>BST<sub>t</sub></b>	See Table 1 and Table 2 below	Energy	Applied to hourly MW consumption
<b>T<sub>t</sub></b>	<b>16,630 RO/MW</b>	Demand	Charge per annum applied to customers' contribution to average system peak
<b>D<sub>t</sub></b>	Network level 33kV <b>4 Bz/KWh</b>  Network level 11kV <b>5 Bz/KWh</b>  Network level 0.415kV <b>11 Bz/KWh</b>	Energy	Applied to each MWh consumption based on customers' connection to each respective distribution voltage level
<b>S<sub>t</sub></b>	<b>50 RO/customer</b>	Standing	Charge per account per annum for administering each customer account

## Energy Charges - Bulk Supply Tariffs (“BST”)

The 2021 BST for the Main Interconnected System (“MIS”) and Dhofar Power System (“DPS”) are shown in Table 1 and Table 2, respectively:

**Table 1: 2022 Bulk Supply Tariff – MIS (RO/MWh):**

	Off-Peak	Night-Peak	Weekday	Weekend
			Day-Peak	Day-Peak
January – March	12	12	12	12
April	15	15	15	15
May – July	18	52	45	20
August – September	15	21	20	17
October	15	15	15	15
November – December	12	12	12	12

Rate Band	Time Period	Days of Week
Off-Peak	03:00 to 12:59 and 16:00 to 21:59	All days
Night-Peak	22:00 to 02:59 (following day)	All days
Weekday Day-Peak	13:00 to 15:59	Sunday to Thursday
Weekend Day-Peak	13:00 to 15:59	Friday and Saturday

**Table 2: 2022 Bulk Supply Tariff - Dhofar Power System (RO/MWh):**

	Night-Peak		Off-Peak Morning	Day-Peak		Off-Peak Afternoon
	Weekday	Weekend	All Days	Weekday	Weekend	All Days
January – March	12	12	12	12	12	12
April	31	24	20	24	19	19
May – June	47	31	29	44	25	26
July – August	17	15	15	14	14	14
September – October	20	17	15	17	17	17
November - December	12	12	12	12	12	12

Rate Band	Time Period	Days of Week
Night-Peak Weekday	00:00 to 02:59 and 20:00 to 23:59	Sunday to Thursday
Night-Peak Weekend	00:00 to 02:59 and 20:00 to 23:59	Friday & Saturday
Off-Peak Morning	3:00 to 09:59	All days
Day-Peak Weekday	10:00 to 15:59	Sunday to Thursday
Day-Peak Weekend	10:00 to 15:59	Friday & Saturday
Off-Peak Afternoon	16:00 to 19:59	All days

**For large RAEC customers based in Dhofar, the Dhofar BST will apply. For all other large RAEC customers, the MIS BST will apply.**

## Transmission Use of System Charge (“T<sub>t</sub>”)

**Transmission Charge (T<sub>t</sub>): 16,630 RO/MW**

Transmission use of system charge is a demand charge based on customers’ contribution to the transmission network’s average system peak also known as Maximum Transmission System Demand (“MTSD”). MTSD is calculated as an average across three snapshots during which total system demand is at its highest (with the three snapshots at least 21 days apart).

$$\text{Average MTSD} = \frac{\text{snapshot 1} + \text{snapshot 2} + \text{snapshot 3}}{3}$$

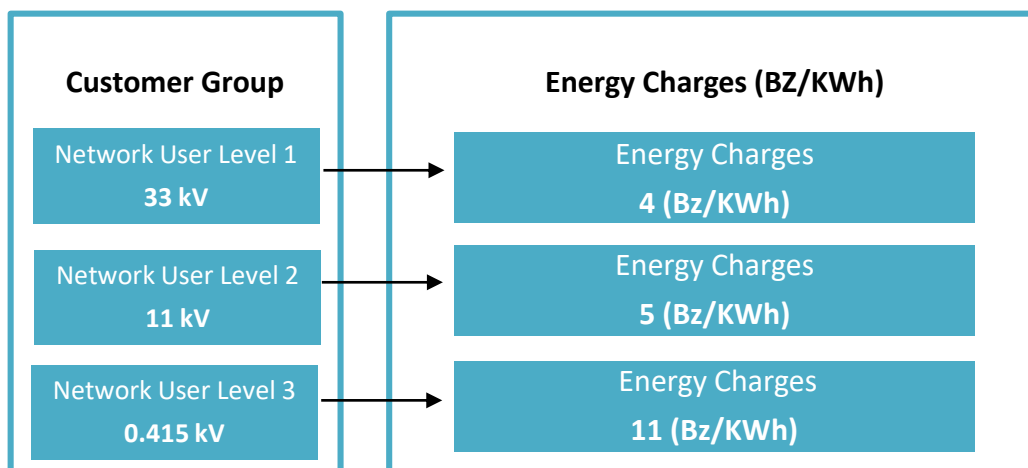
The transmission use of system charge (T<sub>t</sub>) is applied to customers’ average<sup>1</sup> consumption over the three MTSD snapshot hours.

## Distribution Use of System Charges (“D<sub>t</sub>”)

Distribution use of system charges are energy charges that apply to every customer connected to the distribution network. Customers are charged distribution charges based on each respective network level they are connected; Oman network levels comprise of the following:

- Network level 1 at 33 kV
- Network level 2 at 11 kV
- Network level 3 at 0.415 kV

The applicable distribution charges are as follows:



<sup>1</sup> Arithmetic average

## Option (2):

### Seasonal tariff according to the level of connection

	High voltage (132 KV, 220 KV, 400 KV)	33 KV & 11 KV	0.415 KV (LT)
Winter Tariff	17 Bz/KWh	22 Bz/KWh	25 Bz/KWh
Summer Tariff	30 Bz/KWh	35 Bz/KWh	38 Bz/KWh

- Summer Tariff applies from 1<sup>st</sup> May to 30<sup>th</sup> September
- Winter Tariff applies from 1<sup>st</sup> October to 30<sup>th</sup> April

### Option (3):

#### Flat tariff according to the level of connection

	High voltage (132 KV, 220 KV, 400 KV)	33 KV & 11 KV	0.415 KV (LT)
Flat Tariff	21 Bz/KWh	26 Bz/KWh	33 Bz/KWh

**\*The third option is introduced in implementation of the directive from the Council of Ministers of the economic incentive plan to support economic recovery and enhance the performance of the national economy.**